

# Using DAC with WinCvs



**Software Development, Quality and Documentation Tool**

Development Assistant for C V4.0 Documentation  
Release date: November 25, 2002

File name: "DAC WinCvs TN A4.pdf"  
Version 1.3

URL: [http://www.RistanCASE.com/dac/v40/specificsupport/gnu\\_wincvs.php](http://www.RistanCASE.com/dac/v40/specificsupport/gnu_wincvs.php)

Copyright © 1990-2002 RistanCASE GmbH Switzerland. All rights reserved.

The information contained in this document is subject to change without notice.

RistanCASE GmbH makes no warranty of any kind with regard to this manual, including, but not limited to, the implied warranties of merchantability and fitness for a particular purpose. RistanCASE GmbH shall not be liable for errors contained herein, direct, indirect, special, incidental or consequential damages in connection with the furnishing, performance, or use of this material.

ALL RIGHTS RESERVED. No part of this publication may be copied in any form, by photocopy, microfilm, retrieval system, or by any other means now known or hereafter invented without the prior written permission of RistanCASE GmbH.

IBM PC, XT, AT are trademarks of the International Business Machine Corporation.

Microsoft® Windows is a registered trademark of the Microsoft Corporation.

All other trademarks used in this document may be trademarks or registered trademarks of their respective owners and are hereby acknowledged.

### **Corporate Headquarters**

RistanCASE GmbH  
Zielackerstrasse 19  
CH-8304 Wallisellen-Zurich  
Switzerland

Telephone: +41 (0) 1 883 35 70  
Fax: +41 (0) 1 883 35 74

E-mail: [info@RistanCASE.com](mailto:info@RistanCASE.com)

Web: [www.RistanCASE.com](http://www.RistanCASE.com)

---

This document was designed to be distributed electronically and then printed on a laser printer on an as-needed basis. Therefore, the fonts and layout of this document have been chosen for optimal printing rather than for optimal viewing on-screen. To view this document on-screen, however, simply increase the magnification using the magnification box at the top of the window. For the best results when viewing dialog boxes on-screen, increase the magnification to 200%. Some figures have hot links on them.

# Contents

<b>I Requirements .....</b>	<b>1</b>
<b>2 Configuring DAC .....</b>	<b>2</b>
2.1 Version Control System Options.....	2
2.1.1 Connection .....	3
<i>WinCvs (wincvs.exe)</i> .....	3
2.1.2 Project Dependent .....	4
<i>Username</i> .....	4
<i>CVSROOT</i> .....	4
<i>Version labels</i> .....	4
<i>Following DAC project state</i> .....	4
<i>Checkout option</i> .....	5
<i>Output options</i> .....	5
<i>Difference report options</i> .....	5
<b>3 Using WinCvs features from DAC .....</b>	<b>6</b>
3.1 The Version Control System menu .....	6
3.2 The Shortcut menu.....	7
3.3 The Version Control toolbar .....	7
3.4 WinCvs commands available in DAC.....	7
3.4.1 Commit selection .....	8
3.4.2 Update selection.....	9
<i>Reset any sticky date/tag/'-k' option</i> .....	9
<i>Sticky Options</i> .....	9
<i>Settings are the same for all selected files</i> .....	9
3.4.3 Edit selection.....	10
3.4.4 Unedit selection .....	10
3.4.5 Add selection .....	10
<i>Description is the same for all selected files</i> .....	10
3.4.6 Log selection .....	11

3.4.7 Diff selection.....	11
3.4.8 WinCvs .....	11
3.5 The WinCVS status display .....	11
<b>4 Including WinCVS reports in the documentation.....</b>	<b>13</b>
<b>5 Documentation Generator warnings of WinCvs support .....</b>	<b>14</b>
<b>6 Design limitations.....</b>	<b>15</b>
<b>7 Troubleshooting .....</b>	<b>16</b>
<b>8 Technical support.....</b>	<b>18</b>
<b>9 Index .....</b>	<b>19</b>

---

# I Requirements

---

**INFO:**

This technical note only provides information on how to configure DAC to facilitate your work with the WinCvs 1.2, for which the document has primarily been written. Using it as a basis, DAC can easily be configured to work with a later version of WinCvs. The description of the processes of installing, configuring and using WinCvs version 1.2 is beyond the scope of this document. If you would like to know something more about these things, please consult WinCvs user documentation. For further information on DAC, please refer to "Development Assistant for C" documentation V4.0.

- **DAC - V4.0.058 or later** - (Development Assistant for C - RistanCASE). The latest version, with Demo Mode license included, can be downloaded from the following URL: [http://www.RistanCASE.com/dac/v40/dac\\_download.php](http://www.RistanCASE.com/dac/v40/dac_download.php)  
If you are running DAC in Demo Mode, you can easily obtain a trial license and enjoy all the comforts of DAC for two weeks! For more details, choose **Technical Support** from the **Help** menu.
- **WinCvs 1.2 or later** (CvsGui.org)- You can download WinCvs version 1.2 from our site: <http://www.ristancase.com/anonftp/pub/gnu/WinCvs120.zip> or you can download the latest version, from the following URL: <http://www.wincvs.org/download.html>
- **Created WinCVS repository.**
- **DAC project files put under WinCVS control.**

---

## 2 Configuring DAC

---

**NOTE:**

DAC WinCvs support applies only to files in the DAC project.

For WinCvs features to be available from DAC, you have to open the project in DAC in which you want to use WinCvs features and [adjust WinCvs support](#).

After this procedure, DAC is configured and ready to assist you in your [work with WinCvs](#).

### 2.1 Version Control System Options

On the **Options** menu, click **Version Control System** to open the **Version Control System Options** dialog box.

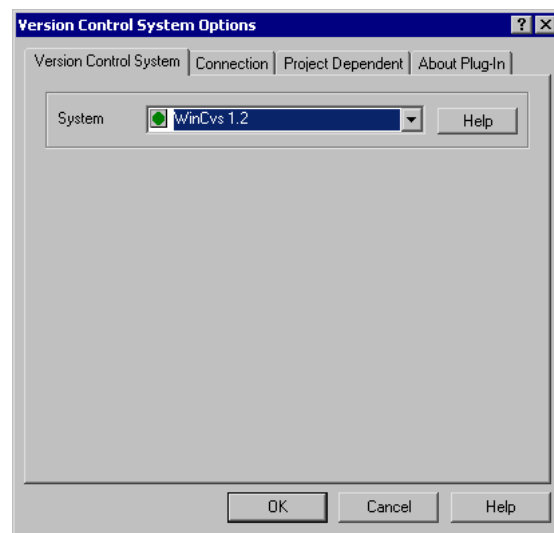


Figure 2.1 Selecting an external VCS system

From the **System** list choose the "WinCvs 1.2". Some additional tabs will appear in the dialog box: [Connection](#), [Project Dependent](#) and **About Plug-In**.

### 2.1.1 Connection

In this tab, you set the the location of the "*wincvs.exe*" file. (By default: "*C:\Program Files\GNU\WinCvs 1.2\wincvs.exe*")

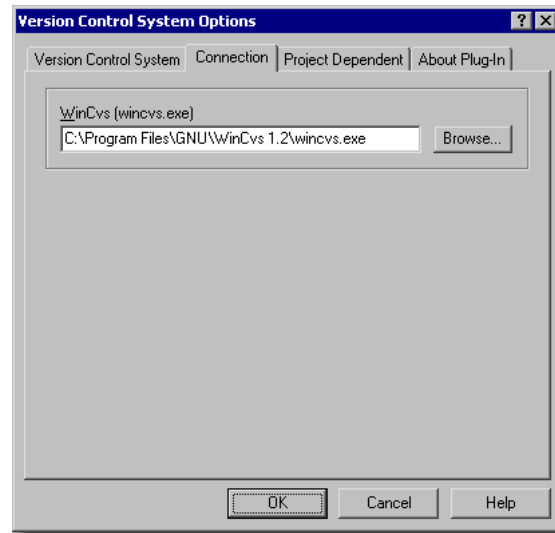


Figure 2.2 Setting the parameters for connecting DAC and WinCvs

#### WinCvs (wincvs.exe)

Enter the location of the "*wincvs.exe*" file.

## 2.1.2 Project Dependent

In this tab, you set the arguments of certain WinCVS commands.

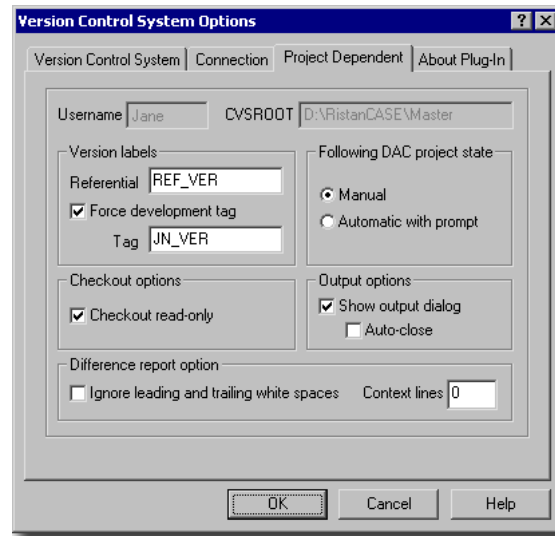


Figure 2.3 Setting WinCVS commands arguments

### Username

The user name under which you are logged on Windows. That is also the name under which you work in WinCvs.

### CVSROOT

The location of the repository defined in WinCvs.

### Version labels

#### *Referential*

Tag or number of the revision in relation to which differences will be displayed.

#### *Force development tag*

Defines that on the **Commit selection** command, a tag is set on a new revision.

#### *Tag*

Tag you want to set on the revision after the **Commit selection** command.

### Following DAC project state

Defines whether the file being added to the DAC project will automatically be added to the WinCVS repository.

***Manual***

A new file of the DAC project must be added to the WinCVS repository manually.

***Automatic with prompt***

A new file of the DAC project is added to the WinCVS repository automatically with a prompt.

**Checkout option*****Checkout read-only***

After the **Commit selection** command (and the **checkout** command executed from WinCvs) the file status will be read-only.

**Output options*****Show Output dialog***

While a WinCVS command is being carried out, the **CVS Command Output** dialog box is displayed.

***Auto-close***

The dialog box is automatically closed when the command has been carried out.

**Difference report options*****Ignore leading and trailing white spaces***

Versions differing only in white spaces (space, TAB) will be considered identical.

***Context lines***


Number of lines in the report on differences before and after the line that is different in the versions compared.

---

## 3 Using WinCvs features from DAC

---

After you have activated WinCvs support, the following is available to you in DAC:

- [The Version Control System menu](#), [The Version Control toolbar](#) and two additional commands of the Project window [shortcut menu](#),
- The [display of the status of files](#) under WinCVS control (hereafter: WinCVS status) via the Project window Logical view (  ).

### 3.1 The Version Control System menu

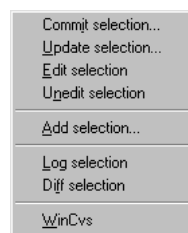


Figure 3.1 The *Version Control System* menu

- **Commit selection** - forms a new revision in the repository,
- **Update selection** - updates the working copy of a selection on the basis of the revision in the repository,
- **Edit selection** - prepares the selection for editing,
- **Unedit selection** - the end of changes to a selection,

- **Add selection** - adds files within the selection to a WinCVS project,
- **Log selection** - displays the history of changes to a selection,
- **Diff selection** - displays the differences between the working copy of a selection and the revision in the repository,
- **WinCvs** - starts the WinCvs environment.

### 3.2 The Shortcut menu

The commands **Commit selection** and **Edit selection** are part of the Project window shortcut menu.

### 3.3 The Version Control toolbar

WinCvs commands are also available on the **Version Control** toolbar. The toolbar appears automatically after the WinCvs support has been adjusted.

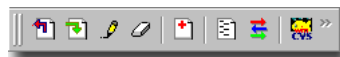


Figure 3.2 The *Version Control* toolbar

 - [Commit selection](#)

 - [Update selection](#)

 - [Edit selection](#)

 - [Unedit selection](#)



 - [Add selection](#)

 - [Log selection](#)

 - [Diff selection](#)

 - [WinCvs](#)

### 3.4 WinCvs commands available in DAC

WinCvs commands can be carried out on a selection in the Logical view () or Folder view () of the Project window or on a file open in the Editor.

If you want to follow the process of a WinCvs command execution, select the **Show Output dialog** in the [Project Dependent](#) tab of the **Version Control System Options** dialog box. If you want to stop the command being carried out, use the **Stop** button.

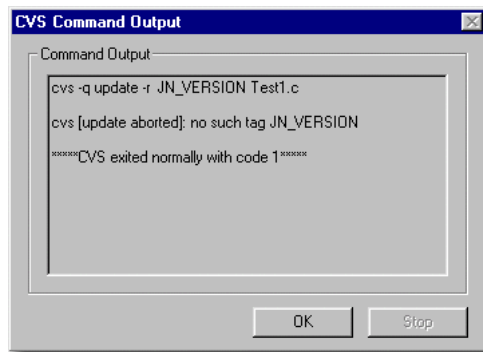


Figure 3.3 Report on the execution of a WinCVS command

If any question is posed during the execution of the WinCVS command, additional buttons, **Yes** and **No**, appear in the dialog box enabling you to respond to the question:

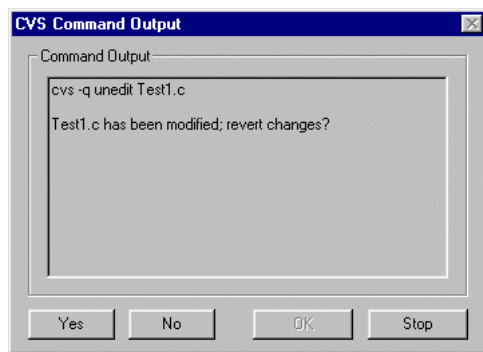


Figure 3.4 Report during the question posed

### 3.4.1 Commit selection

This command corresponds to the WinCvs **Commit selection** command which you use to create a new file revision in the repository. If you want to set the appropriate tag on the new revision, in the [Project Dependent](#) tab of the **Version Control System Options** dialog box, select **Force development tag** and enter the desired Tag. Figure 2-2 shows the dialog box in which you enter revision comments.

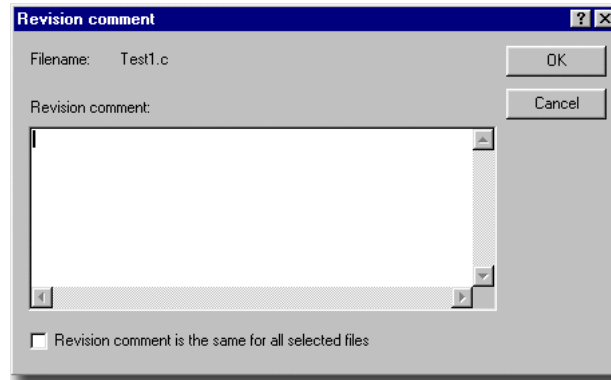


Figure 3.5 Dialog box for entering comments on the **Commit selection** command

If you want the comment to be the same for all files within the selection, select **Revision comment is the same for all selected files**.

### 3.4.2 Update selection

This command corresponds to the WinCvs **Update selection** command which you use to update the working copy of a file on the basis of a revision from the repository. You can assign the necessary parameters of this command:

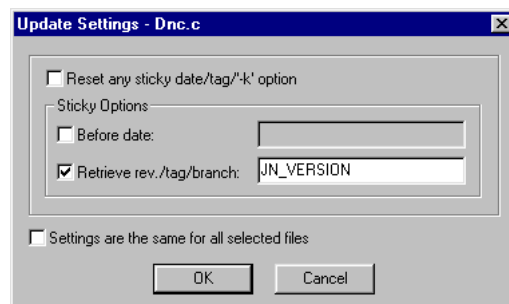


Figure 3.6 Setting the **Update selection** command options

#### **Reset any sticky date/tag/'-k' option**

Resets the sticky dates or tags set. If none of the **Sticky Options** is selected, the working copy of a file is updated on the basis of the last revision in the repository.

#### **Sticky Options**

The date and number or tag of the revision with which the working copy of a file is synchronized.

#### **Settings are the same for all selected files**

The set options apply to all files within the selection.

### 3.4.3 Edit selection

This command corresponds to the WinCvs **Edit selection** command which you use to notify all users who have set the watch flag on a file, that you intend to edit the file.

### 3.4.4 Unedit selection

This command corresponds to the WinCvs **Unedit selection** command which you use to notify other users that you have finished changing the file or that you have decided to cancel these changes.

### 3.4.5 Add selection

This command corresponds to the WinCvs **Add selection** command which you use to add the selected file to the WinCVS repository.

**NOTE:**

The command can be carried out only on files in a directory that is already under WinCVS control.

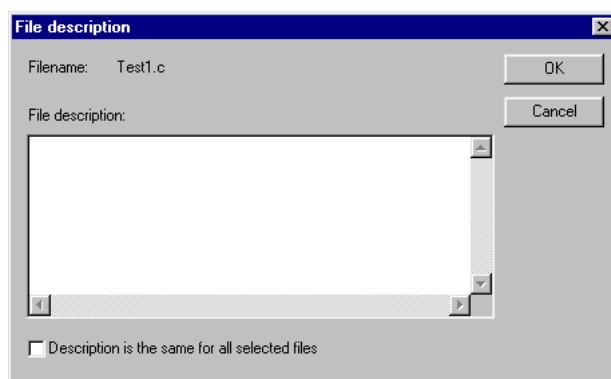


Figure 3.7 Entering the file description on the command *Add selection*

### Description is the same for all selected files

If this option is selected then the comment applies to all selected files.

If the file that is being added is a binary one, a dialog box will appear with a question whether you want to add the file as a binary or a textual one.

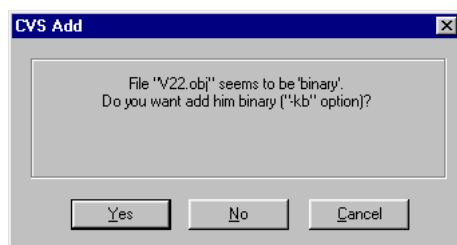


Figure 3.8 Dialog box displayed during adding a binary file

If you want the file being added to the DAC project to be added to the WinCVS repository as well, select **Automatic with prompt** in the [Project Dependent](#) tab of the **Version Control System Options** dialog box.

### 3.4.6 Log selection

This command corresponds to the WinCvs **Log selection** command which is used to display the history of file changes in the DAC Editor.

If the file in which the revision history is to be shown already exists, a dialog box will appear with the question whether the new report is to be added at the end of the existing one or a new one is to be created.

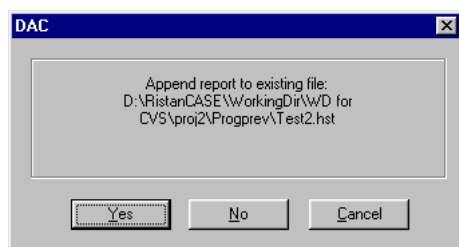


Figure 3.9 Dialog box which appears if the file already exists

### 3.4.7 Diff selection

This command corresponds to the WinCvs **Diff selection** command which displays in the DAC Editor the differences between the working copy of a file and the revision in the repository. In the [Project Dependent](#) tab of the **Version Control System Options** dialog box, enter the **Referential** revision with which the working copy of a file will be compared. If you do not enter the referent revision, the last revision in the repository will be used.

### 3.4.8 WinCvs

This command starts WinCvs environment, while the location of the WinCvs browser ("View / Browse Location / Change") is identical to the location of the DAC project root entered in the **Project root directory** box in the **Directories** tab of the **Project Options** dialog box.

## 3.5 The WinCVS status display

The icon in front of the file in the Project window Logical view ( ) reflects the file WinCVS status:

Icons next to the files in the Project window Logical view

Icon	Explanation
(blue key)	Indicates that the file is in the WinCVS repository and that it is editable
(red key)	Indicates that the file is in the WinCVS repository but that it is not editable

Icons next to the files in the Project window Logical view (Continued)

<b>Icon</b>	<b>Explanation</b>
Other icons	Other icons mark files that are not in the WinCVS repository. For more information please, see Logical View chapter in the Reference Manual of the DAC Documentation.

You can find more detailed information in the **Version Info** tab of the detailed pane of the Project window Logical view:

File state displayed in the **Version info** tab the Project window Logical view

<b>File state</b>	<b>Explanation</b>
<b>Status</b> (file status)	WinCVS status of the project file can be: <ul style="list-style-type: none"> <li>- <i>Not in, VCS</i></li> <li>- <i>Not Editable</i></li> <li>- <i>Editable</i></li> </ul>
<b>Lockers</b> (only if the file status is <i>Editable</i> )	User name under which you have carried out the <b>Edit</b> command on a file
<b>Version Labels</b> (only if the file is in the WinCVS project)	Revision sticky tag or, if there is no tag, revision number.

## 4 Including WinCVS reports in the documentation

### INFO:

You can find more about the Documentation Generator in DAC Documentation (Documentation Generator chapter in the User Manual).

You can include the following WinCVS information in the documentation generated by the Documentation Generator (DG).

Available WinCVS information for the Documentation Generator

WinCVS information	Explanation
<b>VCSHistory</b>	History of changes to a file (the output of the <a href="#">Log selection</a> command)
<b>VCSDifference</b>	Differences between the working copy of a file and the revision in the repository (the output of the <a href="#">Diff selection</a> command)
<b>VCS Data</b>	WinCVS information on the project (referent file version, tag set on a new revision) or file (date and time of the last change in a file, WinCVS status of the file, user name under which you have carried out the Edit command on the file, and the Sticky tag or revision number).

Possible errors in generating **VCSHistory** and **VCSDifference** information are given in [Documentation Generator warnings of WinCvs support](#).

---

## 5 Documentation Generator warnings of WinCvs support

---

**NOTE:**

You can find more about the DG warnings in DAC Documentation (Chapter Documentation Generator in the Reference Manual)

DG warnings for unsuccessful generation of **VCSHistory** and **VCSDiff** information:

DG warnings of WinCvs support

DG warnings	Explanation
<b>WinCvs has not been installed properly!</b>	WinCvs has not installed properly, so DAC cannot read the needed data from the Windows registry
<b>CVS: Nothing known about [...]</b>	CVS control does not have any information on the file [...]
<b>Cannot open output file</b>	The error while opening the temporary file in which the output of the <b>Log</b> or <b>Diff</b> command is stored
<b>CVS command stopped or failed</b>	Problem during carrying out the <b>Log</b> or <b>Diff</b> command.

---

## 6 Design limitations

---

In the **Version Info** tab in the lower pane of the Project window Logical view, not all users who have carried out the **Edit selection** command on the selected file are displayed. This would require access to the repository, which might last for a long time and would considerably slow down DAC functioning.


The other limitation is that in the current Plug-In version, only the *local work mode* is supported (the repository and the working directory are stored locally). It is planned that the following Plug-In versions support *network mode* as well.

---


## 7 Troubleshooting

---

Possible problems and ways to overcome them

<b>Problem</b>	<b>Answer</b>
The icon for the <b>WinCvs 1.2</b> system in the <a href="#">Version Control System</a> tab of the <b>Version Control System Options</b> dialog box is red. (  )	The WinCvs Plug-In version does not correspond to the DAC version. If you select <a href="#">WinCvs 1.2</a> and click the <b>OK</b> button, the information on the existing and the expected version will appear. To obtain the correct version, please contact your supplier.
On trying to confirm the <a href="#">Version Control System Options</a> dialog box, the message is displayed: <b>Cannot save configuration</b>	You have probably added the DAC project (*.dcp) file to the WinCVS repository, or it has been marked as read-only in some other way. You will solve this problem by removing the read-only attribute.
On trying to confirm the <a href="#">Version Control System Options</a> dialog box, the message is displayed: <b>Cannot load "cvs2ntlib.dll"!</b>	Check whether you have entered the correct location of the "wincvs.exe" file in the <b>Version Control System Options</b> dialog box, <a href="#">Connection</a> tab.

Possible problems and ways to overcome them (Continued)

<b>Problem</b>	<b>Answer</b>
<p>The <b>CVSROOT</b> location in the <a href="#">Project Dependent</a> tab of the <a href="#">Version Control System Options</a> dialog box does not correspond to the real location of the repository of your project files.</p>	<p>You have changed the location of the repository in WinCvs (Admin / Preferences / General / Enter the CVSROOT) and DAC has read that data. However, there is no need to worry, WinCvs support will function correctly because WinCvs commands provided by this Plug-In use the CVSROOT adjustment saved in local "WinCVS" directories.</p>
<p>The information in the Project window Logical view (  ) on the status of the file under WinCVS control is incorrect.</p>	<p>You have probably carried out some WinCVS command outside DAC, so that DAC does not have the latest information on the status of the file under WinCVS control. On the <b>Project</b> menu, click <b>Refresh Project Window</b> to gather the valid information and update the information on the status in the Project window Logical view.</p>
<p>A problem appears while WinCvs Plug-In is being configured, and you cannot <a href="#">turn on transaction logging</a> because the <b>VCS Support INI File</b> command is not available on the <b>Configuration Files</b> submenu, on the <b>File</b> menu.</p>	<p>The command <b>VCS Support INI File</b> becomes available only after you have configured WinCvs support. The VCS Support INI file in which you adjust transaction logging ("<i>VpWinCvs12.ini</i>") can be found in the directory in which the DAC project file resides (file with ".dcp" extension) or in the DAC install directory. Open it in any editor and <a href="#">turn on transaction logging</a>. (see <a href="#">Technical support</a>)</p>
<p>While working on the net, a problem appears concerning data interference in the VCS Support INI file.</p>	<p>Create the "<i>VpWinCvs12.ini</i>" file in the directory in which the DAC project file resides (file with ".dcp" extension), and again configure WinCvs support. The data will be stored in the newly formed file.</p>

---

## 8 Technical support

---

In case of problems in working with WinCvs support, the best way is to:

- Activate *transaction logging*:

Transaction logging is activated in the following way:

- On the **File** menu, point to **Configuration Files**, and then click **VCS Support INI File** to open the appropriate INI file.

- In the section:

```
[vpwincvs12.dll]
```

for the keyword **VCSLog** assign the file name (for example: "VCSLog=D:\Temp\WinCvs12.log"). If the absolute path is not specified in the file name, the file will be created in the place where the appropriate project file is.

- If you want the log to come after the previously created one, for the keyword **VCSLogAppend** assign "Yes" (for example: "VCSLogAppend=Yes").
- Close and then open your DAC project.

- Repeat the operation during which the problem appeared,
- On the **Help** menu, click **Technical Support** to open the **DAC Technical Support** and send the appropriate log, along with the description of the problem to the support address shown on the **License Data** tab.

---

## 9 Index

---



---

### Symbols

CVS  
*Nothing known about* 14

---

### C

Cannot open output file 14  
 Configuring DAC 2  
 CVS command stopped or failed 14  
 CVS information in generated  
 documentation  
*VCS Data* 13  
*VCSDifference* 13  
*VCSHistory* 13

---

### D

DAC  
*Demo Mode* 1  
 DAC - V4.0.058 1  
 Design limitations 15

---

### F

File state  
*Lockers* 12  
*Status* 12  
*Version Labels* 12  
 Following DAC project state 4

---

### I

Icon  
*blue key* 11  
*Other icons* 12  
*red key* 11

---

Ignore leading and trailing white  
 spaces 5  
 Including WinCVS reports in the  
 documentation 13

---

### L

license  
*Demo Mode* 1  
*trial* 1

---

### P

Project Dependent  
*Checkout option*  
 Checkout read-only 5  
*CVSROOT* 4  
*Difference report options*  
 Context lines 5  
 Ignore leading and trailing  
 white spaces 5  
*Following DAC project state*  
 Automatic with prompt 5  
 Manual 5  
*Output options*  
 Auto-close 5  
 Show Output dialog 5  
*Username* 4  
*Version labels*  
 Force development tag 4  
 Referential 4  
 Tag 4

---

### R

Requirements 1

---

Revision comment is the same for all  
selected files **9**

---

**S**

System list **3**

---

**T**

Technical support **18**  
Transaction logging **18**  
Troubleshooting **16**

---

**V**

Version Control System  
*Connection* **3**  
*Options* **2**  
*Project Dependent* **4**  
Version Control System menu **6**  
Version Control toolbar **7**

---

**W**

WinCvs (wincvs.exe) **3**  
WinCvs 1.2 **1**  
WinCvs commands **7**  
*Add selection* **10**  
*Commit selection* **8**  
*Diff selection* **11**  
*Edit selection* **10**  
*Log selection* **11**  
*Unedit selection* **10**  
*Update selection* **9**  
*WinCvs* **11**  
WinCvs has not been installed  
properly! **14**  
WinCVS status display **11**